

Cargo Congestion Solution & Focus Points

27th AgTC Conference

June 26, 2015

Gene Seroka, Executive Director



THE PORT
OF LOS ANGELES 

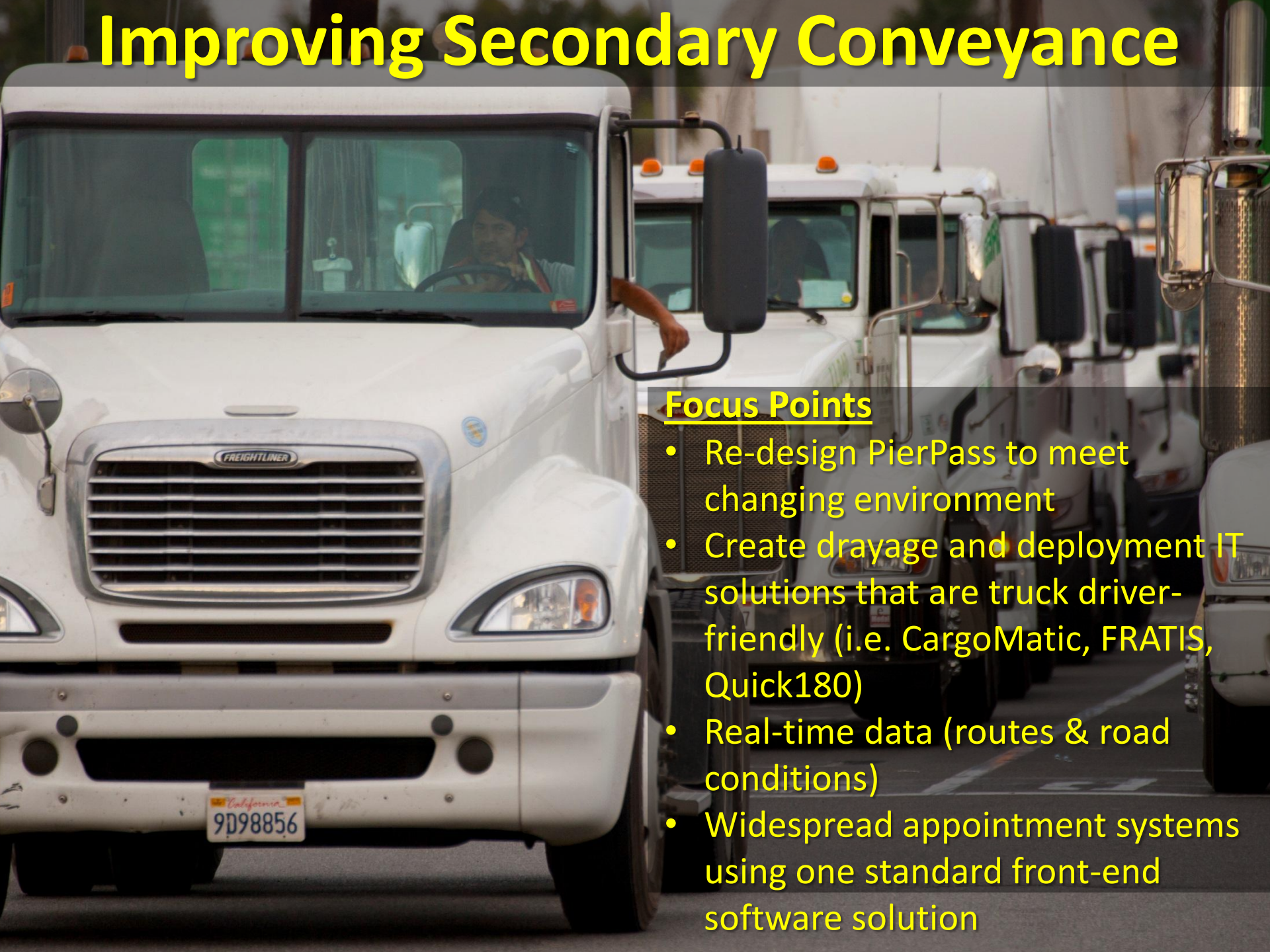
Cargo Flow Into the Marine Terminals

A photograph of a busy marine terminal. In the foreground, several yellow forklifts are lined up, ready for use. In the background, there are stacks of shipping containers. A large green container with the 'EVERGREEN' logo is prominent on the left. Other containers in various colors (green, white, red, blue) are stacked in the distance. A worker in an orange shirt is visible near the containers. The sky is clear and blue.

Focus Points

- Further collaboration between shipping lines, MTO's, BCO's, licensed motor carriers, and railroads
- Reduction in marine terminal container dwell times (terminals need to be more like factories – in and out – not cargo holding areas)
- IT solutions that provide visibility over the entire supply chain, from point of origin to destination

Improving Secondary Conveyance



Focus Points

- Re-design PierPass to meet changing environment
- Create drayage and deployment IT solutions that are truck driver-friendly (i.e. CargoMatic, FRATIS, Quick180)
- Real-time data (routes & road conditions)
- Widespread appointment systems using one standard front-end software solution

Finding Chassis Solutions

Focus Points

- Interoperable Chassis Pool -- opened March 1 – surpassed 1 million by April 21
- Goals
 - more availability where chassis are needed
 - IT systems to manage inventory/availability
- Activate vacant land as needed

Enhancing Rail Efficiency



Focus Points

- Support more on-dock rail usage and development
- Potential short-haul trains between inland locations (i.e. Ontario, Riverside) and port

The Changing Role for Ports

✓ “Landlord” Role versus “Hybrid” Model

✓ Deeper Collaboration is Necessary

- Example: Expanded FMC agreement allows San Pedro Bay Ports to ...
 - Jointly address concerns relative to congestion & supply chain issues
 - Work with supply chain stakeholders to enhance operational efficiencies & terminal velocity
 - Develop performance metrics that are embraced by our supply chain stakeholders
 - Jointly market the gateway and advocate for favorable funding, legislation
 - Continue joint efforts on environmental and safety initiatives

✓ Broader Dialogue with Supply Chain Stakeholders

- Supply Chain Optimization Forum held April 23rd
- Committees and areas of focus are now established

✓ New Levels of Engagement

- Ports need to restore customer confidence; proactively market to the liner alliances; and help carriers, MTOs and secondary conveyance providers achieve efficiency gains



Thank You.

